



SPORT COMPACT

PREMIUM



ELITE



EXTREME





1mm = .03937" .001" = .0254mm

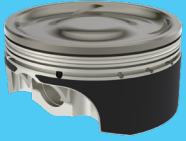
Fractions	Decimals	Millimeters	Fractions	Decimals	Millimeters	MM	INCHES	MM	INCHES
1/64"	.015625"	0.397	33/64"	.515625"	13.097	.1	.0039"	47	1.8504"
1/32"	.03125"	0.794	17/32"	.53125"	13.494	.2	.0079"	48	1.8898"
3/64"	.046875"	1.191	35/64"	.546875"	13.891	.3	.0118"	49	1.9291"
1/16"	.0625"	1.588	9/16"	.5625"	14.288	.4	.0157"	50	1.9685"
5/64"	.078125"	1.984	37/64"	.578125"	14.684	.5	.0197"	51	2.0079"
3/32"	.09375"	2.381	19/32"	.59375"	15.081	.6	.0236"	52	2.0472"
7/64"	.109375"	2.778	39/64"	.609375"	15.478	.7	.0276"	53	2.0866"
1/8"	.1250"	3.175	5/8"	.6250"	15.875	.8	.0315"	54	2.1260"
9/64"	.140625"	3.572	41/64"	.640625"	16.272	.9	.0354"	55	2.1654"
5/32"	.15625"	3.969	21/32"	.65625"	16.669	1	.0394"	56	2.2047"
11/64"	.171875"	4.366	43/64"	.671875"	17.066	2	.0787"	57	2.2441"
3/16"	.1875"	4.763	11/16"	.6875"	17.463	3	.1181"	58	2.2835"
13/64"	.203125"	5.159	45/64"	.703125"	17.859	4	.1575"	59	2.3228"
7/32"	.21875"	5.556	23/32"	.71875"	18.256	5	.1969"	60	2.3622"
15/64"	.234375"	5.953	47/64"	.734375"	18.653	6	.2362"	61	2.4016"
1/4"	.2500"	6.350	3/4"	.7500"	19.050	7	.2756"	62	2.4409"
17/64"	.265625"	6.747	49/64"	.765625"	19.447	8	.3150"	63	2.4803"
9/32"	.28125"	7.144	25/32"	.78125"	19.844	9	.3543"	64	2.5197"
19/64"	.296875"	7.541	51/64"	.796875"	20.241	10	.3937"	65	2.5591"
5/16"	.3125"	7.938	13/16"	.8125"	20.638	11	.4331"	66	2.5984"
21/64"	.328125"	8.334	53/64"	.828125"	21.034	12	.4724"	67	2.6378"
11/32"	.34375"	8.731	27/32"	.84375"	21.431	13	.5118"	68	2.6772"
23/64"	.359375"	9.128	55/64"	.859375"	21.828	14	.5512"	69	2.7165"
3/8"	.3750"	9.525	7/8"	.8750"	22.225	15	.5906"	70	2.7559"
25/64"	.390625"	9.922	57/64"	.890625"	22.622	16	.6299"	71	2.7953"
13/32"	.40625"	10.319	29/32"	.90625"	23.019	17	.6693"	72	2.8346"
27/64"	.421875"	10.716	59/64"	.921875"	23.416	18	.7087"	73	2.8740"
7/16"	.4375"	11.113	15/16"	.9375"	23.813	19	.7480"	74	2.9134"
29/64"	.453125"	11.509	61/64"	.953125"	24.209	20	.7874"	75	2.9528"
15/32"	.46875"	11.906	31/32"	.96875"	24.606	21	.8268"	76	2.9921"
31/64"	.484375"	12.303	63/64"	.984375"	25.003	22	.8661"	77	3.0315"
1/2"	.5000"	12.700	1"	1.000"	25.400	23	.9055"	78	3.0709"
						24	.9449"	79	3.1102"
						25	.9843"	80	3.1496"
						26	1.0236"	81	3.1890"
						27	1.0630"	82	3.2283"
						28	1.1024"	83	3.2677"
						29	1.1417"	84	3.3071"
						30	1.1811"	85	3.3465"
						31	1.2205"	86	3.3858"
						32	1.2598"	87	3.4252"
						33	1.2992"	88	3.4646"
						34	1.3386"	89	3.5039"
						35	1.3780"	90	3.5433"
						36	1.4173"	91	3.5827"
						37	1.4567"	92	3.6220"
						38	1.4961"	93	3.6614"
						39	1.5354"	94	3.7008"
						40	1.5748"	95	3.7402"
						41	1.6142"	96	3.7795"
						42	1.6535"	97	3.8189"
						43	1.6929"	98	3.8583"
						44	1.7323"	99	3.8976"
						45	1.7717"	100	3.9370"
						46	1.8110"		

TABLE OF CONTENTS

ALPHABETICAL LISTING BY MANUFACTURER:

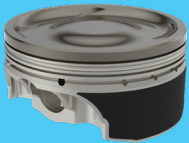
Chrysler.....	79
Ford.....	79
Honda.....	79
Mitsubishi.....	80
Nissan.....	81
Subaru.....	82
Toyota.....	84

SPORT COMPACT LEVELS



PREMIUM
Part number ends in "C" or no letter.

FEATURES: Polished crown
UltraWear M42 Anti-Friction skirt coating
Dual forced pin oiling
2618 or 4032 Alloy



ELITE
Part number ends in "CA".

FEATURES: All of Premium
Plus - Hard Anodized crown
and top ring groove
Lateral Gas Porting. *check note section



EXTREME
Part number ends in "LCAT".

FEATURES: All of Elite
Plus - Hard Anodized crown
and top ring groove
LINE-LINE Abradable skirt coating
ULTRATHERM CM Thermal heat barrier

UEM RING LISTING



PART NUMBER CODES

4000 BASE BORE 4.000"
B RING WIDTH
D TOP RING MATERIAL
8 # CYLS

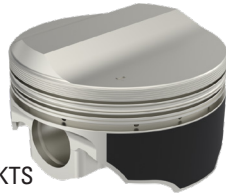
CODE	RING WIDTH	CODE	TOP RING MATERIAL
B	1/16 1/16 3/16	D	Ductile Iron w/Moly
D	1.5 1.5 4.0mm	S	Steel
L	1.0 1.2 2.8mm		
M	1.2 1.2 2.5mm		
T	1.2 1.2 2.8mm		

SPORT COMPACT RING KIT	BORE SIZES
U08100LS	81.00mm
U08150LS	81.50mm
U08200LS	82.00mm
U08500LS	85.00mm
U08550LS	85.50mm
U08600LS	86.00mm
3386TS6.STD	86.00mm
U08625LS	86.25mm
3386TS6.25MM	86.25mm
U08650LS	86.50mm
3386TS6.50MM	86.50mm
3386TS6.75MM	86.75mm
U08700LS	87.00mm
3386TS6.75MM	87.00mm

SPORT COMPACT RING KIT	BORE SIZES
U08750LS	87.50mm
3445LS4.75MM	88.25mm
U08800LS	88.00mm
3445LS4.1.0MM	88.50mm
U08900LS	89.00mm
U08950LS	89.50mm
U09000LS	90.00mm
3622DD4.STD	92.00mm
U09200LS	92.00mm
3622MS4.STD	92.00mm
3622MS4.STD	92.038mm
3622DD4.010	92.25mm
3622MS4.25MM	92.25mm
3622DD4.020	92.50mm

SPORT COMPACT RING KIT	BORE SIZES
U09250LS	92.50mm
3622MS4.50MM	92.50mm
3622DD4.030	92.76mm
U09300LS	93.00mm
U09550LS	95.50mm
U09600LS	96.00mm
3780BD4.020	96.52mm
3780BD4.030	96.77mm
3780BD4.040	97.00mm
3917LS4.STD	99.50mm
3917LS4.STD	99.538mm
3917LS4.25MM	99.75mm
3917LS4.5MM	100.00mm

CHRYSLER NEON / 2.4L DOHC Turbo



IC637CKTS

ALLOY: 4032
PIN: .866" x 2.500"
LOCKS: Spiral RRN-86
RING PACK: 1.2mm, 1.5mm, 2.5mm
VALVE POCKETS:

NOTES:
 -Sold as Piston Kit with rings.
 -For Turbo and Nitrous.
 -.030" Offset Pin
 -Stock Bore 87.50mm

Piston w/ Rings Kit	Bore (mm/in)	Stroke (mm)	Rod (mm)	C/D (mm/in)	Head Type	Head CC's	C/R w/ 50cc Head	Gram Wgt. Piston/Pin	Top Land	Replacement Ring Set
IC637CKTS.75mm	88.25mm/3.474"	101mm	151mm	29.16mm/1.148"	.256" Dome	-19	8.1	340/99	.200"	3445LS4.75MM
IC637CKTS1.0mm	88.50mm/3.484"	101mm	151mm	29.16mm/1.148"	.256" Dome	-19	8.1	340/99	.200"	3445LS4.1.0MM

FORD

FORD 2300



IC939

IC946

ALLOY: 2618
PIN: ¹.912" x 2.250" ².927" x 2.250"
LOCKS: Spiral PRL99-3
RING PACK: 1/16, 1/16, 3/16
VALVE POCKETS: In- 2.010" x 123" Deep
 Ex- 1.710" x .105" Deep

NOTES:
 -Sold as Piston Kit with rings.
 -Centered Pin
¹-5.200" Rod Stock
²-5.700" Rod SB Chevy

Piston w/ Rings Kit	Bore (mm/in)	Stroke (mm)	Rod (in)	C/D (mm/in)	Head Type	Head CC's	C/R w/ 60cc 64cc	Gram Wgt. Piston/Pin	Top Land	Replacement Ring Set
IC939KTD.020 ¹	96.52mm/3.800"	79.4mm	5.200"	40.38mm/1.590"	Flat Top	+2.5	9.3 8.9	388/85	.210"	3780BD4.020
IC939KTD.030 ¹	96.77mm/3.810"	79.4mm	5.200"	40.38mm/1.590"	Flat Top	+2.5	9.3 8.9	388/85	.210"	3780BD4.030
IC939KTD.040 ¹	97.00mm/3.820"	79.4mm	5.200"	40.38mm/1.590"	Flat Top	+2.5	9.3 8.9	388/85	.210"	3780BD4.040
IC946KTD.020 ²	96.52mm/3.800"	79.4mm	5.700"	27.68mm/1.090"	Flat Top	+2.5	9.3 8.9	316/85	.206"	3780BD4.020
IC946KTD.030 ²	96.77mm/3.810"	79.4mm	5.700"	27.68mm/1.090"	Flat Top	+2.5	9.3 8.9	316/85	.206"	3780BD4.030
IC946KTD.040 ²	97.00mm/3.820"	79.4mm	5.700"	27.68mm/1.090"	Flat Top	+2.5	9.3 8.9	316/85	.206"	3780BD4.040

ELITE

HONDA

HONDA B-SERIES



IC557CAK

IC559CAK

ALLOY: 2618
PIN: *.8270x2.000x.160C-SCR415H
 .8270x2.000x.225C-SCR415H
LOCKS: Round SRW-018
RING PACK: 1.0mm, 1.2mm, 2.8mm
VALVE POCKETS:

NOTES:
 -Sold as piston and ring kits.
 -Lateral Gas Ports.
 -Anodized crown and top ring groove.
 -Dual forced pin oiling, .030" offset.
¹-For Turbo and Nitrous.
²-For Naturally Aspirated.

Piston w/ Rings Kit	Bore (mm/in)	Stroke (mm)	Rod (mm)	C/D (mm/in)	Head Type	Head CC's	C/R w/ 45cc Head	Gram Wgt. Piston/Pin	Top Land	Replacement Ring Set
*IC557CAK.STD ¹	81.0mm/3.189"	89mm	137.0mm	30.0mm/1.181"	DISH	+10	8.3		.280"	U08100LS
*IC557CAK.5MM ¹	81.5mm/3.209"	89mm	137.0mm	30.0mm/1.181"	DISH	+10	8.3		.280"	U08150LS
*IC557CAK.1.0MM ¹	82.0mm/3.228"	89mm	137.0mm	30.0mm/1.181"	DISH	+10	8.3		.280"	U08200LS
IC558CAK.STD ¹	81.0mm/3.189"	89mm	137.0mm	30.0mm/1.181"	FLAT TOP	+3	9.2		.280"	U08100LS
IC558CAK.5MM ¹	81.5mm/3.209"	89mm	137.0mm	30.0mm/1.181"	FLAT TOP	+3	9.2		.280"	U08150LS
IC558CAK.1.0MM ¹	82.0mm/3.228"	89mm	137.0mm	30.0mm/1.181"	FLAT TOP	+3	9.2		.280"	U08200LS
IC559CAK.STD ²	81.0mm/3.189"	89mm	137.0mm	30.0mm/1.181"	DOMES	-7	11.0		.280"	U08100LS
IC559CAK.5MM ²	81.5mm/3.209"	89mm	137.0mm	30.0mm/1.181"	DOMES	-7	11.0		.280"	U08150LS
IC559CAK.1.0MM ²	82.0mm/3.228"	89mm	137.0mm	30.0mm/1.181"	DOMES	-7	11.0		.280"	U08200LS



HONDA, continued

HONDA K-20 / K-24



ALLOY: 2618
PIN: .8660x2.000x.160C-SCR415H
LOCKS: Round SRW-004
RING PACK: 1.0mm, 1.2mm, 2.8mm
VALVE POCKETS:

NOTES:
 -Sold as piston and ring kits.
 -Lateral Gas Ports.
 -Anodized crown and top ring groove.
 -Dual forced pin oiling, .030" offset.

Piston w/ Rings Kit	Bore (mm/in)	Stroke (mm)	Rod (mm)	C/D (mm/in)	Head Type	Head CC's	C/R w/ 45cc Head	Gram Wgt. Piston/Pin	Top Land	Replacement Ring Set
IC560CAK.STD	86.0mm/3.386"	99mm	152.0mm	30.0mm/1.181"	FLAT TOP	+3	11.1		.240	U08600LS
IC560CAK.5MM	86.5mm/3.405"	99mm	152.0mm	30.0mm/1.181"	FLAT TOP	+3	11.1		.240	U08650LS
IC560CAK.1.0MM	87.0mm/3.425"	99mm	152.0mm	30.0mm/1.181"	FLAT TOP	+3	11.1		.240	U08700LS
IC560CAK.1.5MM	87.5mm/3.445"	99mm	152.0mm	30.0mm/1.181"	FLAT TOP	+3	11.1		.240	U08750LS
IC561CAK.STD	86.0mm/3.386"	99mm	152.0mm	30.0mm/1.181"	DOME	-5	12.8		.240	U08600LS
IC561CAK.5MM	86.5mm/3.405"	99mm	152.0mm	30.0mm/1.181"	DOME	-5	12.8		.240	U08650LS
IC561CAK.1.0MM	87.0mm/3.425"	99mm	152.0mm	30.0mm/1.181"	DOME	-5	12.8		.240	U08700LS
IC561CAK.1.5MM	87.5mm/3.445"	99mm	152.0mm	30.0mm/1.181"	DOME	-5	12.8		.240	U08750LS

MITSUBISHI

ELITE

MITSUBISHI 4G63T / EVO 4-9 2.0L



ALLOY: 2618
PIN: .8660x2.250x.225C-SCR415H
LOCKS: Round SRW-004
RING PACK: 1.0mm, 1.2mm, 2.8mm
VALVE POCKETS:

NOTES:
 -Sold as piston and ring kits.
 -Lateral Gas Ports.
 -Anodized crown and top ring groove.
 -Dual forced pin oiling, .030" offset.
 -For Turbo and Nitrous.

Piston w/ Rings Kit	Bore (mm/in)	Stroke (mm)	Rod (mm)	C/D (mm/in)	Head Type	Head CC's	C/R w/ 47cc Head	Gram Wgt. Piston/Pin	Top Land	Replacement Ring Set
IC542CAK.STD	85.0mm/3.346"	88mm	150.0mm	35.0mm/1.375"	FLAT TOP	+5	9.5		.280	U08500LS
IC542CAK.5MM	85.5mm/3.366"	88mm	150.0mm	35.0mm/1.375"	FLAT TOP	+5	9.5		.280	U08550LS
IC542CAK.1.0MM	86.0mm/3.386"	88mm	150.0mm	35.0mm/1.375"	FLAT TOP	+5	9.5		.280	U08600LS
IC542CAK.1.5MM	86.5mm/3.405"	88mm	150.0mm	35.0mm/1.375"	FLAT TOP	+5	9.5		.280	U08650LS
IC542CAK.2.0MM	87.0mm/3.425"	88mm	150.0mm	35.0mm/1.375"	FLAT TOP	+5	9.5		.280	U08700LS
IC543CAK.STD	85.0mm/3.346"	88mm	150.0mm	35.0mm/1.375"	DISH	+12	8.6		.280	U08500LS
IC543CAK.5MM	85.5mm/3.366"	88mm	150.0mm	35.0mm/1.375"	DISH	+12	8.6		.280	U08550LS
IC543CAK.1.0MM	86.0mm/3.386"	88mm	150.0mm	35.0mm/1.375"	DISH	+12	8.6		.280	U08600LS
IC543CAK.1.5MM	86.5mm/3.405"	88mm	150.0mm	35.0mm/1.375"	DISH	+12	8.6		.280	U08650LS
IC543CAK.2.0MM	87.0mm/3.425"	88mm	150.0mm	35.0mm/1.375"	DISH	+12	8.6		.280	U08700LS
IC544CAK.STD	85.0mm/3.346"	100mm	150.0mm	28.7mm/1.135"	DISH	+19	8.8		.280	U08500LS
IC544CAK.5MM	85.5mm/3.366"	100mm	150.0mm	28.7mm/1.135"	DISH	+19	8.8		.280	U08550LS
IC544CAK.1.0MM	86.0mm/3.386"	100mm	150.0mm	28.7mm/1.135"	DISH	+19	8.8		.280	U08600LS
IC544CAK.1.5MM	86.5mm/3.405"	100mm	150.0mm	28.7mm/1.135"	DISH	+19	8.8		.280	U08650LS
IC544CAK.2.0MM	87.0mm/3.425"	100mm	150.0mm	28.7mm/1.135"	DISH	+19	8.8		.280	U08700LS

MITSUBISHI 4B11T / EVO X 2.0L



ALLOY: 2618
PIN: .9050x2.250x.225C-SCR415H
LOCKS: Round SRW-029
RING PACK: 1.0mm, 1.2mm, 2.8mm
VALVE POCKETS:

NOTES:
 -Sold as piston and ring kits.
 -Lateral Gas Ports.
 -Anodized crown and top ring groove.
 -Dual forced pin oiling, .030" offset.
 -For Turbo and Nitrous.

Piston w/ Rings Kit	Bore (mm/in)	Stroke (mm)	Rod (mm)	C/D (mm/in)	Head Type	Head CC's	C/R w/ 49cc Head	Gram Wgt. Piston/Pin	Top Land	Replacement Ring Set
IC555CAK.STD	86.0mm/3.386"	86mm	143.75mm	33.25mm/1.309"	FLAT TOP	+5	9.2		.280	U08600LS
IC555CAK.5MM	86.5mm/3.405"	86mm	143.75mm	33.25mm/1.309"	FLAT TOP	+5	9.2		.280	U08650LS
IC555CAK.1.0MM	87.0mm/3.425"	86mm	143.75mm	33.25mm/1.309"	FLAT TOP	+5	9.2		.280	U08700LS
IC556CAK.STD	86.0mm/3.386"	86mm	143.75mm	33.25mm/1.309"	DOME	-3	10.4		.280	U08600LS
IC556CAK.5MM	86.5mm/3.405"	86mm	143.75mm	33.25mm/1.309"	DOME	-3	10.4		.280	U08650LS
IC556CAK.1.0MM	87.0mm/3.425"	86mm	143.75mm	33.25mm/1.309"	DOME	-3	10.4		.280	U08700LS

NISSAN SR20 DE / 4 Cyl. 16V



IC562CAK

ALLOY: 2618
PIN: .8660x2.250x.160C-SCR415H
LOCKS: Round SRW-004
RING PACK: 1.0mm, 1.2mm, 2.8mm
VALVE POCKETS:

NOTES:
 -Sold as piston and ring kits.
 -Lateral Gas Ports.
 -Anodized crown and top ring groove.
 -Dual forced pin oiling, .030" offset.
 -For Turbo and Nitrous.

Piston w/ Rings Kit	Bore (mm/in)	Stroke (mm)	Rod (mm)	C/D (mm/in)	Head Type	Head CC's	C/R w/ 45cc Head	Gram Wgt. Piston/Pin	Top Land	Replacement Ring Set
IC562CAK.STD	86.0mm/3.386"	86mm	136.25mm	32.0mm/1.260"	DISH	+10	9.3		.280	U08600LS
IC562CAK.5MM	86.5mm/3.405"	86mm	136.25mm	32.0mm/1.260"	DISH	+10	9.3		.280	U08650LS
IC562CAK.1.0MM	87.0mm/3.425"	86mm	136.25mm	32.0mm/1.260"	DISH	+10	9.3		.280	U08700LS

NISSAN KA24 / 4 Cyl. 16V



IC563CAK

ALLOY: 2618
PIN: .8270x2.500x.160C-SCR415H
LOCKS: Round SRW-018
RING PACK: 1.0mm, 1.2mm, 2.8mm
VALVE POCKETS:

NOTES:
 -Sold as piston and ring kits.
 -Lateral Gas Ports.
 -Anodized crown and top ring groove.
 -Dual forced pin oiling, .030" offset.
 -For Turbo and Nitrous.

Piston w/ Rings Kit	Bore (mm/in)	Stroke (mm)	Rod (mm)	C/D (mm/in)	Head Type	Head CC's	C/R w/ 46cc Head	Gram Wgt. Piston/Pin	Top Land	Replacement Ring Set
IC563CAK.STD	89.0mm/3.504"	96mm	165.0mm	33.94mm/1.336"	DISH	+20	9.3		.280	U08900LS
IC563CAK.5MM	89.5mm/3.524"	96mm	165.0mm	33.94mm/1.336"	DISH	+20	9.3		.280	U08950LS
IC563CAK.1.0MM	90.0mm/3.543"	96mm	165.0mm	33.94mm/1.336"	DISH	+20	9.3		.280	U09000LS

NISSAN QR25DE / 4 Cyl. 16V



IC570CAK

ALLOY: 2618
PIN: .8270x2.500x.160C-SCR415H
LOCKS: Round SRW-019
RING PACK: 1.0mm, 1.2mm, 2.8mm
VALVE POCKETS:

NOTES:
 -Sold as piston and ring kits.
 -Anodized crown and top ring groove.
 -Dual forced pin oiling, .030" offset.

Piston w/ Rings Kit	Bore (mm/in)	Stroke (mm)	Rod (mm)	C/D (mm/in)	Head Type	Head CC's	C/R w/ 55cc Head	Gram Wgt. Piston/Pin	Top Land	Replacement Ring Set
IC570CAK.STD	89.0mm/3.504"	100.0mm	143.0mm	32.0mm/1.260"	DOME	+0	10.6		.260	U08900LS
IC570CAK.5MM	89.5mm/3.524"	100.0mm	143.0mm	32.0mm/1.260"	DOME	+0	10.6		.260	U08950LS
IC570CAK.1.0MM	90.0mm/3.543"	100.0mm	143.0mm	32.0mm/1.260"	DOME	+0	10.6		.260	U09000LS

NISSAN RB25 / 6 Cyl. 24V



IC569CAK

ALLOY: 2618
PIN: .8270x2.500x.160C-SCR415H
LOCKS: Round SRW-018
RING PACK: 1.0mm, 1.2mm, 2.8mm
VALVE POCKETS:

NOTES:
 -Sold as piston and ring kits.
 -Anodized crown and top ring groove.
 -Dual forced pin oiling, .030" offset.
 -For Turbo and Nitrous.

Piston w/ Rings Kit	Bore (mm/in)	Stroke (mm)	Rod (mm)	C/D (mm/in)	Head Type	Head CC's	C/R w/ 66.5cc Head	Gram Wgt. Piston/Pin	Top Land	Replacement Ring Set
IC569CAK.25MM	86.25mm/3.396"	71.7mm	121.5mm	31.5mm/1.240"	DOME	-15	8.5		.260	U08625LS
IC569CAK.5MM	86.5mm/3.405"	71.7mm	121.5mm	31.5mm/1.240"	DOME	-15	8.5		.260	U08650LS
IC569CAK.1.0MM	87.0mm/3.425"	71.7mm	121.5mm	31.5mm/1.240"	DOME	-15	8.5		.260	U08700LS

NISSAN RB26 / 6Cyl. 24V



IC564CAK

ALLOY: 2618
PIN: .8270x2.500x.160C-SCR415H
LOCKS: Round SRW-018
RING PACK: 1.0mm, 1.2mm, 2.8mm
VALVE POCKETS:

NOTES:
 -Sold as piston and ring kits.
 -Lateral Gas Ports.
 -Anodized crown and top ring groove.
 -Dual forced pin oiling, .030" offset.
 -For Turbo and Nitrous.

Piston w/ Rings Kit	Bore (mm/in)	Stroke (mm)	Rod (mm)	C/D (mm/in)	Head Type	Head CC's	C/R w/ 67cc Head	Gram Wgt. Piston/Pin	Top Land	Replacement Ring Set
IC564CAK.STD	86.0mm/3.386"	73mm	121.5mm	30.0mm/1.180"	DOME	-12	7.8		.240	U08600LS
IC564CAK.5MM	86.5mm/3.405"	73mm	121.5mm	30.0mm/1.180"	DOME	-12	7.8		.240	U08650LS
IC564CAK.1.0MM	87.0mm/3.425"	73mm	121.5mm	30.0mm/1.180"	DOME	-12	7.8		.240	U08700LS

NISSAN VG30 / 6 Cyl. 24V



IC565CA

ALLOY: 2618
PIN: .8660x2.500x.160C-SCR415H
LOCKS: Round SRW-004
RING PACK: 1.0mm, 1.2mm, 2.8mm
VALVE POCKETS:

NOTES:
 -Sold as piston and ring kits.
 -Lateral Gas Ports.
 -Anodized crown and top ring groove.
 -Dual forced pin oiling, .030" offset.
 -For Turbo and Nitrous.

Piston w/ Rings Kit	Bore (mm/in)	Stroke (mm)	Rod (mm)	C/D (mm/in)	Head Type	Head CC's	C/R w/ 49cc Head	Gram Wgt. Piston/Pin	Top Land	Replacement Ring Set
IC565CAK.STD	87.0mm/3.425"	83mm	154.0mm	32.0mm/1.260"	DISH	+8	8.6		.280	U08700LS
IC565CAK.5MM	87.5mm/3.445"	83mm	154.0mm	32.0mm/1.260"	DISH	+8	8.6		.280	U08750LS
IC565CAK.1.0MM	88.0mm/3.464"	83mm	154.0mm	32.0mm/1.260"	DISH	+8	8.6		.280	U08800LS

NISSAN VQ35 / 6 Cyl. 24V



IC566CA

ALLOY: 2618
PIN: .8660x2.500x.160C-SCR415H
LOCKS: Round SRW-004
RING PACK: 1.0mm, 1.2mm, 2.8mm
VALVE POCKETS:

NOTES:
 -Sold as piston and ring kits.
 -Lateral Gas Ports.
 -Anodized crown and top ring groove.
 -Dual forced pin oiling, .030" offset.
 -For Turbo and Nitrous.

Piston w/ Rings Kit	Bore (mm/in)	Stroke (mm)	Rod (mm)	C/D (mm/in)	Head Type	Head CC's	C/R w/ 57cc Head	Gram Wgt. Piston/Pin	Top Land	Replacement Ring Set
IC566CAK.STD	95.5mm/3.760"	81mm	144.2mm	29.67mm/1.168"	DISH	+8	9.0		.280	U09550LS
IC566CAK.5MM	96.0mm/3.780"	81mm	144.2mm	29.67mm/1.168"	DISH	+8	9.0		.280	U09600LS

SUBARU

ELITE

SUBARU 4 Cyl. FA20 (TOYOTA 4U - GSE)



IC571CAK

ALLOY: 2618
PIN: .866" x 2.250" x .155"
LOCKS: Round 2 tang
RING PACK: 1.0mm, 1.2mm, 2.8mm
VALVE POCKETS:

NOTES:
 -Sold as piston and ring kits.
 -Anodized crown and top ring groove.
 -Dual forced pin oiling, .030" offset.
 -For Turbo and Nitrous.

Piston w/ Rings Kit	Bore (mm/in)	Stroke (mm)	Rod (mm)	C/D (mm/in)	Head Type	Head CC's	C/R w/ 39cc Head	Gram Wgt. Piston/Pin	Top Land	Replacement Ring Set
IC571CAK.STD	86.00mm/3.386"	86mm	129.3mm	32.66mm/1.286"	DISH	+9	10.6		.260"	U08600LS
IC571CAK.25MM	86.25mm/3.396"	86mm	129.3mm	32.66mm/1.286"	DISH	+9	10.6		.260"	U08625LS
IC571CAK.5MM	86.50mm/3.405"	86mm	129.3mm	32.66mm/1.286"	DISH	+9	10.6		.260"	U08650LS
IC571CAK.1.0MM	87.00mm/3.425"	86mm	129.3mm	32.66mm/1.286"	DISH	+9	10.6		.260"	U08700LS

SUBARU 4 Cyl. EJ20



IC638CK



IC568CAK

ALLOY: 2618 24032
PIN: .905" x 2.250" x .155"
LOCKS: Round 2 tang
RING PACK: 1 1.2mm, 1.2mm, 2.5mm
 2 1.0mm, 1.2mm, 2.8mm
VALVE POCKETS:

NOTES:
 -Sold as piston and ring kits.
 *-Lateral Gas Ports.
 *-Anodized crown and top ring groove.
 -Dual forced pin oiling, .030" offset.
 -For Turbo and Nitrous.

Piston w/ Rings Kit	Bore (mm/in)	Stroke (mm)	Rod (mm)	C/D (mm/in)	Head Type	Head CC's	C/R w/ 48cc 50cc	Gram Wgt. Piston/Pin	Top Land	Replacement Ring Set
IC638CK.STD	2 92.00mm/3.622	75mm	130.5mm	32.59mm/1.283"	Inverted Dish	+13.4	8.3 8.1	353/136	.236"	3622MS4.STD
IC638CK.038mm	2 92.038mm/3.6235	75mm	130.5mm	32.59mm/1.283"	Inverted Dish	+13.4	8.3 8.1	353/136	.236"	3622MS4.STD
IC638CK.25mm	2 92.25mm/3.632	75mm	130.5mm	32.59mm/1.283"	Inverted Dish	+13.4	8.3 8.1	353/136	.236"	3622MS4.25MM
IC638CK.5mm	2 92.50mm/3.642	75mm	130.5mm	32.59mm/1.283"	Inverted Dish	+13.4	8.3 8.1	353/136	.236"	3622MS4.50MM
*IC568CAK.STD	1 92.00mm/3.622	75mm	130.5mm	32.66mm/1.286"	Inverted Dish	+8	9.0 8.7		.280"	U09200LS
*IC568CAK.5MM	1 92.50mm/3.642	75mm	130.5mm	32.66mm/1.286"	Inverted Dish	+8	9.0 8.7		.280"	U09250LS
*IC568CAK.1.0MM	1 93.00mm/3.662	75mm	130.5mm	32.66mm/1.286"	Inverted Dish	+8	9.0 8.7		.280"	U09300LS

NEW 2.5L applications are available in three levels.

- Premium-** 4032 and 2618 Alloy, Standard thick wall wrist pin, M42 skirt coating.
- Elite-** 2618 Alloy, H13 Tool steel pin, Line2Line abrasible skirt coating.
- Extreme-** 2618 Alloy, H13 Tool steel pin, Line2Line abrasible skirt coating, hard anodized crown and top ring groove. Ultra Therm CM thermal barrier.

STOCK REPLACEMENT CAST PISTONS IN SILVOLITE SECTION ON PAGE 94

**PREMIUM SERIES
SUBARU 2.5L**

4032 and 2618 Alloy, Standard thick wall wrist pin, M42 skirt coating.



ALLOY: ¹2618 ²4032
PIN: .905" x 2.250" x .217"
LOCKS: Round 2 tang
RING PACK: 1.2mm, 1.2mm, 2.0mm
VALVE POCKETS: ³In- 38.96mm x .140" Ex- 34.74mm x .061"
⁴In- 34.00mm x .227" Ex- 34.00mm x .227"

NOTES:
 -Sold as Piston Kit with rings.
 -For Turbo and Nitrous.
 -Dual forced pin oiling, .020" Offset.
 -*Anodized top ring groove and crown.

Piston w/ Rings Kit	Bore (mm/in)	Stroke (mm)	Rod (mm)	C/D (mm/in)	Head Type	Head CC's	C/R w/ 50cc	54cc	Gram Wgt. Piston/Pin	Top Land	Replacement Ring Set
IC537CK.STD ²⁻³	99.5mm/3.917"	79mm	130.5mm	30.70mm/1.209"	.047" Dome	-7	11.7	11.0	402/136	.180	3917LS4.STD
IC537CK.038MM ²⁻³	99.538mm/3.9185"	79mm	130.5mm	30.70mm/1.209"	.047" Dome	-7	11.7	11.0	402/136	.180	3917LS4.STD
IC537CK.25MM ²⁻³	99.75mm/3.927"	79mm	130.5mm	30.70mm/1.209"	.047" Dome	-7	11.7	11.0	402/136	.180	3917LS4.25MM
IC537CK.5MM ²⁻³	100mm/3.937"	79mm	130.5mm	30.70mm/1.209"	.047" Dome	-7	11.7	11.0	402/136	.180	3917LS4.5MM
IC629CK.STD ²⁻³	99.5mm/3.917"	79mm	131.6mm	29.49mm/1.161"	.047" Dome	-7	11.7	11.0	392/136	.180	3917LS4.STD
IC629CK.038MM ²⁻³	99.538mm/3.9185"	79mm	131.6mm	29.49mm/1.161"	.047" Dome	-7	11.7	11.0	392/136	.180	3917LS4.STD
IC629CK.25MM ²⁻³	99.75mm/3.927"	79mm	131.6mm	29.49mm/1.161"	.047" Dome	-7	11.7	11.0	392/136	.180	3917LS4.25MM
IC629CK.5MM ²⁻³	100mm/3.937"	79mm	131.6mm	29.49mm/1.161"	.047" Dome	-7	11.7	11.0	392/136	.180	3917LS4.5MM
IC992CK.STD ²⁻⁴	99.5mm/3.917"	79mm	130.5mm	30.70mm/1.209"	Cir. Dish	+22.3	8.7	8.3	369/136	.175	3917LS4.STD
IC992CK.038MM ²⁻⁴	99.538mm/3.9185"	79mm	130.5mm	30.70mm/1.209"	Cir. Dish	+22.3	8.7	8.3	369/136	.175	3917LS4.STD
IC992CK.25MM ²⁻⁴	99.75mm/3.927"	79mm	130.5mm	30.70mm/1.209"	Cir. Dish	+22.3	8.7	8.3	369/136	.175	3917LS4.25MM
IC992CK.5MM ²⁻⁴	100mm/3.937"	79mm	130.5mm	30.70mm/1.209"	Cir. Dish	+22.3	8.7	8.3	369/136	.175	3917LS4.5MM
IC506CAK.STD ^{*1-4}	99.5mm/3.917"	79mm	130.5mm	30.70mm/1.209"	Cir. Dish	+22.3	8.7	8.3	388/136	.175	3917LS4.STD
IC506CAK.038MM ^{*1-4}	99.538mm/3.9185"	79mm	130.5mm	30.70mm/1.209"	Cir. Dish	+22.3	8.7	8.3	388/136	.175	3917LS4.STD
IC506CAK.25MM ^{*1-4}	99.75mm/3.927"	79mm	130.5mm	30.70mm/1.209"	Cir. Dish	+22.3	8.7	8.3	388/136	.175	3917LS4.25MM
IC506CAK.5MM ^{*1-4}	100mm/3.937"	79mm	130.5mm	30.70mm/1.209"	Cir. Dish	+22.3	8.7	8.3	388/136	.175	3917LS4.5MM

**ELITE SERIES
SUBARU 2.5L**

2618 Alloy, H13 Tool steel pin, Line2Line abrasible skirt coating.



ALLOY: 2618
PIN: .905" x 2.250" x .217"
LOCKS: Round 2 tang
RING PACK: 1.2mm, 1.2mm, 2.0mm
VALVE POCKETS: In- 34.00mm x .227" Deep
 Ex- 34.00mm x .227" Deep

NOTES:
 -Sold as Piston Kit with rings.
 -For Turbo and Nitrous.
 -Dual forced pin oiling, .020" Offset.

Piston w/ Rings Kit	Bore (mm/in)	Stroke (mm)	Rod (mm)	C/D (mm/in)	Head Type	Head CC's	C/R w/ 54cc Head	Gram Wgt. Piston/Pin	Top Land	Replacement Ring Set
IC506LCAK.STD	99.5mm/3.917"	79mm	130.5mm	30.70mm/1.209"	Cir. Dish	+22.3	8.5	388/136	.175	3917LS4.STD
IC506LCAK.038MM	99.538mm/3.9185"	79mm	130.5mm	30.70mm/1.209"	Cir. Dish	+22.3	8.5	388/136	.175	3917LS4.STD
IC506LCAK.25MM	99.75mm/3.927"	79mm	130.5mm	30.70mm/1.209"	Cir. Dish	+22.3	8.5	388/136	.175	3917LS4.25MM
IC506LCAK.5MM	100mm/3.937"	79mm	130.5mm	30.70mm/1.209"	Cir. Dish	+22.3	8.5	388/136	.175	3917LS4.5MM
IC519LCAK.STD	99.5mm/3.917"	79mm	130.5mm	30.33mm/1.194"	Cir. Dish	+22.3	8.5	388/136	.175	3917LS4.STD
IC519LCAK.038MM	99.538mm/3.9185"	79mm	130.5mm	30.33mm/1.194"	Cir. Dish	+22.3	8.5	388/136	.175	3917LS4.STD
IC519LCAK.25MM	99.75mm/3.927"	79mm	130.5mm	30.33mm/1.194"	Cir. Dish	+22.3	8.5	388/136	.175	3917LS4.25MM
IC519LCAK.5MM	100mm/3.937"	79mm	130.5mm	30.33mm/1.194"	Cir. Dish	+22.3	8.5	388/136	.175	3917LS4.5MM

Continued on Page 84...

EXTREME SERIES SUBARU 2.5L

2618 Alloy, H13 Tool steel pin, Line2Line abrasable skirt coating, hard anodized crown and top ring groove. Ultra Therm CM thermal barrier.



ALLOY: 2618
PIN: .905" x 2.250" x .217"
LOCKS: Round 2 tang
RING PACK: 1.2mm, 1.2mm, 2.0mm
VALVE POCKETS: In- 34.00mm x .227" Deep
 Ex- 34.00mm x .227" Deep

NOTES:
 -Sold as Piston Kit with rings.
 -For Turbo and Nitrous.
 -Dual forced pin oiling, .020" Offset.

Piston w/ Rings Kit	Bore (mm/in)	Stroke (mm)	Rod (mm)	C/D (mm/in)	Head Type	Head CC's	C/R w/ 54cc Head	Gram Wgt. Piston/Pin	Top Land	Replacement Ring Set
IC506LCATK.STD	99.5mm/3.917"	79mm	130.5mm	30.70mm/1.209"	Cir. Dish	+22.3	8.5	388/136	.175	3917LS4.STD
IC506LCATK.038MM	99.538mm/3.9185"	79mm	130.5mm	30.70mm/1.209"	Cir. Dish	+22.3	8.5	388/136	.175	3917LS4.STD
IC506LCATK.25MM	99.75mm/3.927"	79mm	130.5mm	30.70mm/1.209"	Cir. Dish	+22.3	8.5	388/136	.175	3917LS4.25MM
IC506LCATK.5MM	100mm/3.937"	79mm	130.5mm	30.70mm/1.209"	Cir. Dish	+22.3	8.5	388/136	.175	3917LS4.5MM
IC519LCATK.STD	99.5mm/3.917"	79mm	130.5mm	30.33mm/1.194"	Cir. Dish	+22.3	8.5	388/136	.175	3917LS4.STD
IC519LCATK.038MM	99.538mm/3.9185"	79mm	130.5mm	30.33mm/1.194"	Cir. Dish	+22.3	8.5	388/136	.175	3917LS4.STD
IC519LCATK.25MM	99.75mm/3.927"	79mm	130.5mm	30.33mm/1.194"	Cir. Dish	+22.3	8.5	388/136	.175	3917LS4.25MM
IC519LCATK.5MM	100mm/3.937"	79mm	130.5mm	30.33mm/1.194"	Cir. Dish	+22.3	8.5	388/136	.175	3917LS4.5MM
IC554LCATK.25MM	99.75mm/3.927"	83mm	130.5mm	28.45mm/1.120"	Flat Top	+7.5	10.3	385/136	.180	3917LS4.25MM
IC554LCATK.5MM	100mm/3.937"	83mm	130.5mm	28.45mm/1.120"	Flat Top	+7.5	10.3	385/136	.180	3917LS4.5MM

TOYOTA

TOYOTA 2.4L 22RE/22R NATURALLY ASPIRATED



ALLOY: 4032
PIN: .866" x 2.500" x
LOCKS: Spiral RRN-86
RING PACK: 2-1.5mm / 1-4mm
VALVE POCKETS: In- .213" x 2.000"
 Ex- .124" x 1.676"

NOTES:
 -Sold as Piston Kit with rings.
 -Dual forced pin oiling, Centered Pin.
 -Profiled dish design, .056" deep.

Piston w/ Rings Kit	Bore (mm/in)	Stroke (mm)	Rod (mm)	C/D (mm/in)	Head Type	Head CC's	C/R w/ 60cc Head	Gram Wgt. Piston/Pin	Top Land	Replacement Ring Set
IC985KTD.STD	92mm/3.622"	89mm	147.95mm	34.16mm/1.345"	Profiled Dish	+6.6	9.0	366/99	.300"	3622DD4.STD
IC985KTD.010	92.25mm/3.632"	89mm	147.95mm	34.16mm/1.345"	Profiled Dish	+6.6	9.0	366/99	.300"	3622DD4.010
IC985KTD.020	92.50mm/3.642"	89mm	147.95mm	34.16mm/1.345"	Profiled Dish	+6.6	9.0	366/99	.300"	3622DD4.020
IC985KTD.030	92.76mm/3.652"	89mm	147.95mm	34.16mm/1.345"	Profiled Dish	+6.6	9.0	366/99	.300"	3622DD4.030

TOYOTA 2.4L 22RE/22R Turbo



ALLOY: 4032
PIN: .866" x 2.500" x
LOCKS: Spiral RRN-86
RING PACK: 2-1.5mm / 1-4mm
VALVE POCKETS: In- .102" x 2.000"
 Ex- .008" x 1.676"

NOTES:
 -Sold as Piston Kit with rings.
 -Dual forced pin oiling, Centered Pin.
 -Piston is .142" below deck with .270" top land.
 -Designed for Turbo applications.

Piston w/ Rings Kit	Bore (mm/in)	Stroke (mm)	Rod (mm)	C/D (mm/in)	Head Type	Head CC's	C/R w/ 60cc Head	Gram Wgt. Piston/Pin	Top Land	Replacement Ring Set
IC986KTD.STD	92mm/3.622"	89mm	147.95mm	30.81mm/1.213"	Flat Top	+3	7.5	355/99	.270"	3622DD4.STD
IC986KTD.010	92.25mm/3.632"	89mm	147.95mm	30.81mm/1.213"	Flat Top	+3	7.5	355/99	.270"	3622DD4.010
IC986KTD.020	92.50mm/3.642"	89mm	147.95mm	30.81mm/1.213"	Flat Top	+3	7.5	355/99	.270"	3622DD4.020
IC986KTD.030	92.76mm/3.652"	89mm	147.95mm	30.81mm/1.213"	Flat Top	+3	7.5	355/99	.270"	3622DD4.030

TOYOTA 2.4L 22RE/22R Turbo



IC987

ALLOY: 4032
PIN: .866" x 2.500"
LOCKS: Spiral RRN-86
RING PACK: 2-1.5mm / 1-4mm
VALVE POCKETS: In- .017" x 2.000" Deep
 Ex- N/A

NOTES:
 -Sold as Piston Kit with rings.
 -Centered pin.
 -Piston is .188" below deck with .270" top land.
 -Designed for Turbo applications.

Piston w/ Rings Kit	Bore (mm/in)	Stroke (mm)	Rod (mm)	C/D (mm/in)	Head Type	Head CC's	C/R w/ 60cc Head	Gram Wgt. Piston/Pin	Top Land	Replacement Ring Set
IC987KTD.STD	92mm/3.622"	89mm	147.95mm	29.64mm/1.167"	Flat Top	0	7.0	351/99	.270"	3622DD4.STD
IC987KTD.010	92.25mm/3.632"	89mm	147.95mm	29.64mm/1.167"	Flat Top	0	7.0	351/99	.270"	3622DD4.010
IC987KTD.020	92.50mm/3.642"	89mm	147.95mm	29.64mm/1.167"	Flat Top	0	7.0	351/99	.270"	3622DD4.020
IC987KTD.030	92.76mm/3.652"	89mm	147.95mm	29.64mm/1.167"	Flat Top	0	7.0	351/99	.270"	3622DD4.030

EXTREME SERIES

TOYOTA SUPRA 2.5L 1JZ GTE / 3.0L 2JZ GTE Turbo



IC679LCATK

IC684LCATK

ALLOY: 2618
PIN: .866" x 2.250" x .201"
LOCKS: Round SRW-026
RING PACK: 1.2mm, 1.2mm, 2.8mm
VALVE POCKETS: In- 1.460" x .186" Deep
 Ex- 1.280" x .181" Deep

NOTES:
 -HI-BOOST application comes standard with Line2Line Skirt Coating and Anodized Crown to Top Ring Groove.
 -Centered Pin.
 -Kit includes Total Seal rings and upgraded 9310 thick wall pins.
 -Valve pockets will accept 1MM oversize intake/exhaust valves.
 -Stroke sizes 1JZ - 71.5mm, 2JZ - 86mm
 -Rod sizes 1JZ - 125.25mm, 2JZ - 142mm

Piston w/ Rings Kit	Bore (mm/in)	Stroke (mm)	Rod (mm)	C/D (mm/in)	Head Type	Head CC's	C/R 41cc	C/R 44.5cc	Gram Wgt. Piston/Pin	Top Land	Replacement Ring Set
IC679LCATK.STD	86mm/3.386"	See Notes	See Notes	33.98mm/1.338"	Dish	+15		2JZ8.5	330/122	.278"	3386TS6.STD
IC679LCATK.25MM	86.25mm/3.396"	See Notes	See Notes	33.98mm/1.338"	Dish	+15		2JZ8.5	330/122	.278"	3386TS6.25MM
IC679LCATK.50MM	86.50mm/3.405"	See Notes	See Notes	33.98mm/1.338"	Dish	+15		2JZ8.5	330/122	.278"	3386TS6.50MM
IC679LCATK.75MM	86.75mm/3.415"	See Notes	See Notes	33.98mm/1.338"	Dish	+15		2JZ8.5	330/122	.278"	3386TS6.75MM
IC679LCATK.1.00MM	87.00mm/3.425"	See Notes	See Notes	33.98mm/1.338"	Dish	+15		2JZ8.5	330/122	.278"	3386TS6.1.00MM
IC683LCATK.STD	86mm/3.386"	See Notes	See Notes	33.98mm/1.338"	Dish	+7.5	1JZ8.5	2JZ9.5	334/122	.280"	3386TS6.STD
IC683LCATK.25MM	86.25mm/3.396"	See Notes	See Notes	33.98mm/1.338"	Dish	+7.5	1JZ8.5	2JZ9.5	334/122	.280"	3386TS6.25MM
IC683LCATK.50MM	86.50mm/3.405"	See Notes	See Notes	33.98mm/1.338"	Dish	+7.5	1JZ8.5	2JZ9.5	334/122	.280"	3386TS6.50MM
IC683LCATK.75MM	86.75mm/3.415"	See Notes	See Notes	33.98mm/1.338"	Dish	+7.5	1JZ8.5	2JZ9.5	334/122	.280"	3386TS6.75MM
IC683LCATK.1.00MM	87.00mm/3.425"	See Notes	See Notes	33.98mm/1.338"	Dish	+7.5	1JZ8.5	2JZ9.5	334/122	.280"	3386TS6.1.00MM
IC684LCATK.STD	86mm/3.386"	See Notes	See Notes	33.98mm/1.338"	Dome	-1.1	1JZ9.5	2JZ10.5	345/122	.278"	3386TS6.STD
IC684LCATK.25MM	86.25mm/3.396"	See Notes	See Notes	33.98mm/1.338"	Dome	-1.1	1JZ9.5	2JZ10.5	345/122	.278"	3386TS6.25MM
IC684LCATK.50MM	86.50mm/3.405"	See Notes	See Notes	33.98mm/1.338"	Dome	-1.1	1JZ9.5	2JZ10.5	345/122	.278"	3386TS6.50MM
IC684LCATK.75MM	86.75mm/3.415"	See Notes	See Notes	33.98mm/1.338"	Dome	-1.1	1JZ9.5	2JZ10.5	345/122	.278"	3386TS6.75MM
IC684LCATK.1.00MM	87.00mm/3.425"	See Notes	See Notes	33.98mm/1.338"	Dome	-1.1	1JZ9.5	2JZ10.5	345/122	.278"	3386TS6.1.00MM



NUMERICAL LISTING

PART#	MFG	DISP	ROD	DESCRIPTION	RING PACK	PG.
IC500	CHEVY	350	5.700	FLAT TOP 5cc 2V	2-1.5mm, 1-3.0mm	12
IC501A	CHEVY	350	5.700	FLAT TOP 5cc 2V	2-1.5mm, 1-3.0mm	12
IC502	CHEVY	350	6.000	FLAT TOP 5cc 2V	2-1.5mm, 1-3.0mm	12
IC503	CHEVY	350	6.000	FLAT TOP 5cc 2V	2-1.5mm, 1-3.0mm	15
IC505	CHRY	478	6.760	DISH 12cc 1V	2-1/16", 1-3/16"	29
IC507	CHEVY	632	6.700	OC -40cc 1V	.043", 1/16", 3/16"	25
IC508	CHEVY	598	6.700	OC -39cc 1V	.043", 1/16", 3/16"	25
IC509	CHEVY	582	6.385	OC -40cc 1V	.043", 1/16", 3/16"	25
IC510	CHEVY	565	6.385	OC -33cc 1V	.043", 1/16", 3/16"	25
IC511	CHEVY	540	6.385	OC -33cc 1V	.043", 1/16", 3/16"	25
IC512	CHEVY	540	6.385	H/DOME -36cc 1V	.043", 1/16", 3/16"	24
IC513	CHRY	478	6.760	FLAT TOP 4.5cc 2V	2-1/16", 1-3/16"	29
IC514	CHEVY	632	6.700	OC -44cc 1V	.043", 1/16", 3/16"	25
IC515	CHRY	493	6.768	DISH 12cc 2V	2-1/16", 1-3/16"	31
IC516	CHEVY	540	6.385	DOME -10cc 1V	.043", 1/16", 3/16"	24
IC517	FORD	460	6.605	S-DISH 15cc 1V	2-1/16", 1-3/16"	51
IC518LCAK	CHEVY	350	6.000	FLAT TOP 4.1cc 2V	2-1.5mm, 1-3.0mm	12
IC520	GM	382	6.125	FLAT TOP 4cc 2V	2-1.2mm, 1-3.0mm	7
IC521	GM	346	6.098	FLAT TOP 4cc 2V	2-1.2mm, 1-3.0mm	7
IC522	GM	346	6.125	FLAT TOP 4cc 2V	2-1.2mm, 1-3.0mm	7
IC524	GM	346	6.098	DISH 16.5cc 2V	2-1.2mm, 1-3.0mm	7
IC525	GM	346	6.125	DISH 16.5cc 2V	2-1.2mm, 1-3.0mm	7
IC526	GM	382	6.125	DISH 10cc 2V	2-1.2mm, 1-3.0mm	7
IC528	GM	365	6.125	FLAT TOP 4cc 2V	2-1.2mm, 1-3.0mm	8
IC529	GM	403	6.125	DISH 15cc 2V	2-1.2mm, 1-3.0mm	8
IC530	GM	365	6.125	DISH 12.5cc 2V	2-1.2mm, 1-3.0mm	8
IC531	GM	403	6.125	FLAT TOP 4cc 2V	2-1.2mm, 1-3.0mm	8
IC532	GM	403	6.125	DISH 20cc 2V	2-1.2mm, 1-3.0mm	8
IC533	GM	403	6.125	DISH 8cc 2V	2-1.2mm, 1-3.0mm	8
IC534	GM	412	6.125	DISH 20cc 2V	2-1.2mm, 1-3.0mm	8
IC535	CHRY	391	6.125	DISH 4cc 2V	2-1.5mm, 1-3.0mm	35
IC536	CHRY	391	6.125	DISH 20cc 2V	2-1.5mm, 1-3.0mm	35
IC538	CHRY	402	6.125	DISH 7.5cc 2V	2-1.5mm, 1-3.0mm	35
IC539	CHRY	417	6.125	DISH 12.5cc 2V	2-1.5mm, 1-3.0mm	35
IC540	CHRY	417	6.125	DISH 22cc 2V	2-1.5mm, 1-3.0mm	35
IC541	CHRY	402	6.125	DISH 23cc 2V	2-1.5mm, 1-3.0mm	35
IC545	GM	327	6.098	FLAT TOP 3cc 2V	2-1.2mm, 1-3.0mm	6
IC546	GM	327	6.125	FLAT TOP 3cc 2V	2-1.2mm, 1-3.0mm	6
IC547	GM	327	6.098	DOME -5cc 2V	2-1.2mm, 1-3.0mm	6
IC548	GM	327	6.125	DOME -5cc 2V	2-1.2mm, 1-3.0mm	6
IC549	GM	346	6.125	DOME -10cc 1V	2-1.2mm, 1-3.0mm	6
IC550	GM	346	6.125	DOME -10cc 2V	2-1.2mm, 1-3.0mm	6
IC551	GM	365	6.125	FLAT TOP 4cc 2V	2-1.2mm, 1-3.0mm	7
IC552	GM	403	6.125	FLAT TOP 4cc 2V	2-1.2mm, 1-3.0mm	7
IC553	GM	365	6.125	DISH 12.5cc 2V	2-1.2mm, 1-3.0mm	7
IC600	CHEVY	454	6.135	DOME -43cc 1V	2-1/16", 1-3/16"	21
IC601	CHEVY	454	6.385	DOME -43cc 1V	2-1/16", 1-3/16"	21
IC603	CHEVY	498	6.385	DOME -43cc 1V	2-1/16", 1-3/16"	22
IC604	CHEVY	350	6.000	FLAT TOP 8.9cc 2V	2-1.5mm, 1-3mm	12
IC605	CHEVY	363	6.000	SLD DOME -11cc 2V	2-1.5mm, 1-3mm	14
IC606	CHEVY	370	6.125	HLW DOME -11cc 2V	2-1.5mm, 1-3mm	14
IC608	CHEVY	388	6.000	HLW DOME -11cc 2V	2-1.5mm, 1-3mm	16
IC609	CHEVY	400	6.000	SLD DOME -9cc 2V	2-1.5mm, 1-3mm	17
IC611	CHEVY	434	6.000	FLAT TOP 8cc 2V	2-1.5mm, 1-3mm	19
IC612	CHEVY	434	6.000	DISH 20cc 2V	2-1.5mm, 1-3mm	19
IC613	FORD	347	5.400	FLAT TOP 0cc	2-1.5mm, 1-3mm	40

PART#	MFG	DISP	ROD	DESCRIPTION	RING PACK	PG.
IC617	FORD	369	5.400	HLW DOME -4.87cc 2V	2-1.5mm, 1-3mm	42
IC623	CHEVY	350	6.000	FLAT TOP 4.7cc 2V	2-1.5mm, 1-3mm	12
IC624	FORD	Flathead	7.000	DOME	2-3/32", 1-5/32"	36
IC625	FORD	Flathead	7.000	DOME	2-3/32", 1-5/32"	36
IC626	FORD	Flathead	7.000	DOME	2-3/32", 1-5/32"	36
IC627	FORD	Flathead	7.000	DOME	2-3/32", 1-5/32"	36
IC629C	SUBARU	2.5L	131.6mm	DOME -7cc	2-1.2mm, 1-2.0mm	83
IC631	PONT	505	6.800	FLAT TOP 15.4cc 2V	2-1/16", 1-3/16"	59
IC635	FORD	460	6.605	STEP-DISH 15cc 1V	2-1/16", 1-3/16"	51
IC636	FORD	460	6.605	FLAT TOP 3.4cc 2V	2-1/16", 1-3/16"	52
IC637C	CHRY	2.4L	151mm	DOME -19cc	1.2mm, 1.5mm, 2.5mm	79
IC638C	SUBARU	2.0L	130.5mm	Square Dish 13.4cc	2-1.2mm, 1-2.5mm	82
IC639	FORD	427	6.200	DISH 17.3cc 2V	2-1/16", 1-3/16"	45
IC640	CHEVY	434	6.000	DOME -7cc 2V	2-1.5mm, 1-3mm	20
IC640	CHEVY	400	6.125	DOME -7cc 2V	2-1.5mm, 1-3mm	17
IC645C	CHRY	5.7L HEMI	6.125	DISH 13.8cc 2V	2-1.5mm, 1-3mm	35
IC646C	CHRY	5.7L HEMI	6.125	DOME .02cc 2V	2-1.5mm, 1-3mm	35
IC647C	CHRY	5.7L HEMI	6.125	DOME -14.6cc 2V	2-1.5mm, 1-3mm	35
IC648C	CHRY	5.7L HEMI	6.125	DISH 17cc 2V	2-1.5mm, 1-3mm	35
IC649C	CHRY	5.7L HEMI	6.125	DISH 3.3cc 2V	2-1.5mm, 1-3mm	35
IC650C	CHRY	5.7L HEMI	6.125	DOME -13.5cc 2V	2-1.5mm, 1-3mm	35
IC651C	CHRY	5.7L HEMI	6.125	DISH 21.2cc 2V	2-1.5mm, 1-3mm	35
IC652C	CHRY	5.7L HEMI	6.125	DISH 7cc 2V	2-1.5mm, 1-3mm	35
IC653C	CHRY	5.7L HEMI	6.125	DOME -8.7cc 2V	2-1.5mm, 1-3mm	35
IC665C	FORD	444	6.700	FLAT TOP - 7cc	2-1/16", 1-3/16"	50
IC667	FORD	444	6.700	DISH - 22cc	2-1/16", 1-3/16"	49
IC668C	AMC	4.6L	6.123	DISH - 27cc	2-5/64", 1-3/16"	6
IC679LCA	TOYOTA	2.5L/3.0L	142mm	DISH 15cc	1.2mm, 1.2mm, 2.8mm	85
IC683LCA	TOYOTA	2.5L/3.0L	142mm	DISH 7.5cc	1.2mm, 1.2mm, 2.8mm	85
IC684LCA	TOYOTA	2.5L/3.0L	142mm	DOME -1.1cc	1.2mm, 1.2mm, 2.8mm	85
IC686	FORD	302	5.155	DOME 6cc	2-1/16", 1-3/16"	39
IC687	CHRY	383	6.358	DOME -4.5cc 2V	2-1/16", 1-3/16"	28
IC688C	FORD	351C	5.778	FLAT TOP 2cc 1V	2-1/16", 1-3/16"	46
IC689	CHRY	431	6.760	FLAT TOP 4.5cc 2V	2-1/16", 1-3/16"	29
IC690	CHRY	431	6.760	DISH 12cc 2V	2-1/16", 1-3/16"	29
IC691	FORD	297	5.850	DISH 10cc 2V or 4V	2-1.5mm, 1-3.0mm	37
IC692	FORD	297	5.850	DISH 18cc 2V or 4V	2-1.5mm, 1-3.0mm	37
IC693	FORD	297	5.850	DISH 10cc 3V	2-1.5mm, 1-3.0mm	37
IC694	FORD	297	5.850	DISH 18cc 3V	2-1.5mm, 1-3.0mm	37
IC695	FORD	429	6.605	FLAT TOP 1V	2-1/16", 1-3/16"	51
IC702	CHEVY	350	6.000	FLAT TOP 4.9cc 2V	2-1/16", 1-3/16"	12
IC709	FORD	347	5.400	FLAT TOP 4.8cc 2V	2-1/16", 1-3/16"	41
IC717	CHEVY	350	5.700	FLAT TOP 4.9cc 2V	2-1/16", 1-3/16"	12
IC718	CHEVY	383	6.000	FLAT TOP 4.9cc 2V	2-1/16", 1-3/16"	15
IC719	FORD	302	5.090	FLAT TOP 4.8cc 2V	2-1/16", 1-3/16"	38
IC719	FORD	289	5.155	FLAT TOP 4.8cc 2V	2-1/16", 1-3/16"	38
IC719	FORD	393W	5.956	FLAT TOP 4.8cc 2V	2-1/16", 1-3/16"	43
IC720	FORD	331	5.400	FLAT TOP 4.8cc 2V	2-1/16", 1-3/16"	40
IC721	FORD	418W	6.200	FLAT TOP 4.8cc 2V	2-1.5mm, 1-3mm	45
IC721	FORD	408W	6.250	FLAT TOP 4.8cc 2V	2-1.5mm, 1-3mm	44
IC722	FORD	408W	6.125	FLAT TOP 4.8cc 2V	2-1.5mm, 1-3mm	44
IC722	FORD	393W	6.200	FLAT TOP 4.8cc 2V	2-1.5mm, 1-3mm	44
IC722	FORD	383W	6.250	FLAT TOP 4.8cc 2V	2-1.5mm, 1-3mm	42
IC723	FORD	393W	6.200	STEP-DISH 25.8cc 2V	2-1.5mm, 1-3mm	43
IC723	FORD	383W	6.250	STEP-DISH 25.8cc 2V	2-1.5mm, 1-3mm	42
IC724	FORD	418W	6.200	STEP-DISH 25.8cc 2V	2-1.5mm, 1-3mm	45

TECH LINE 800-648-7970 or email at tech@uempistons.com

NUMERICAL LISTING , continued



PART#	MFG	DISP	ROD	DESCRIPTION	RING PACK	PG.
IC724	FORD	408W	6.250	STEP-DISH 25.8cc 2V	2-1.5mm, 1-3mm	44
IC725	FORD	331	5.400	STEP-DISH 12.6cc 2V	2-1/16", 1-3/16"	40
IC726	CHEVY	350	5.700	STEP-DISH 18.6cc 2V	2-1/16", 1-3/16"	11
IC727	CHEVY	350	5.700	SLD DOME -6.3cc 2V	2-1/16", 1-3/16"	13
IC728	CHEVY	383	5.700	FLAT TOP 4.9cc 2V	2-1/16", 1-3/16"	15
IC729	FORD	351W	5.956	FLAT TOP 4.8cc 2V	2-1/16", 1-3/16"	41
IC730	FORD	347	5.400	STEP-DISH 16.5cc 2V	2-1/16", 1-3/16"	40
IC731	CHEVY	350	6.000	STEP-DISH 18.6cc 2V	2-1/16", 1-3/16"	11
IC732	CHEVY	350	6.000	SLD DOME -6.3cc 2V	2-1/16", 1-3/16"	13
IC733	CHEVY	383	6.000	SLD DOME -6.3cc 2V	2-1/16", 1-3/16"	16
IC734	CHEVY	383	6.000	STEP-DISH 18.6cc 2V	2-1/16", 1-3/16"	15
IC735	CHEVY	383	5.700	STEP-DISH 18.6cc 2V	2-1/16", 1-3/16"	15
IC736	FORD	302	5.090	SLD DOME -6.8cc 2V	2-1/16", 1-3/16"	39
IC736	FORD	289	5.155	SLD DOME -6.8cc 2V	2-1/16", 1-3/16"	38
IC736	FORD	393W	5.956	SLD DOME -6.8cc 2V	2-1/16", 1-3/16"	43
IC737	CHEVY	383	5.700	SLD DOME -6.3cc 2V	2-1/16", 1-3/16"	16
IC738	FORD	351W	5.956	SLD DOME -6.8cc 2V	2-1/16", 1-3/16"	42
IC739	FORD	347	5.400	SLD DOME -8cc 2V	2-1/16", 1-3/16"	41
IC740	FORD	331	5.400	SLD DOME -6.8cc 2V	2-1/16", 1-3/16"	40
IC741	CHRY	360	6.123	FLAT TOP 5cc 2V	2-1/16", 1-3/16"	26
IC742	CHRY	360	6.123	DCUP 9.6cc 2V	2-1/16", 1-3/16"	26
IC743	CHRY	360	6.123	SLD DOME -11.2cc 2V	2-1/16", 1-3/16"	27
IC744	CHRY	408	6.123	FLAT TOP 5cc 2V	2-1/16", 1-3/16"	28
IC745	CHRY	408	6.123	STEP-DISH 20.5cc 2V	2-1/16", 1-3/16"	27
IC746	FORD	302	5.400	SLD DOME -6.8cc 2V	2-1/16", 1-3/16"	39
IC747	FORD	302	5.400	FLAT TOP 4.8cc 2V	2-1/16", 1-3/16"	39
IC748	CHEVY	502	6.135	FLAT TOP 3cc 1V	2-1/16", 1-3/16"	23
IC749	CHEVY	502	6.135	DOME -17cc 1V	2-1/16", 1-3/16"	23
IC750	FORD	408W	6.200	STEP-DISH 15.8cc 2V	2-1/16", 1-3/16"	44
IC751	CHEVY	400	5.700	FLAT TOP 4.8cc 2V	2-1/16", 1-3/16"	18
IC752	CHEVY	400	5.700	SLD DOME -6.3cc 2V	2-1/16", 1-3/16"	18
IC753	CHEVY	400	5.700	STEP-DISH 26.6cc 2V	2-1/16", 1-3/16"	18
IC754	CHEVY	400	5.700	STEP-DISH 15.2cc 2V	2-1/16", 1-3/16"	18
IC755	CHEVY	400	6.000	FLAT TOP 4.8cc 2V	2-1/16", 1-3/16"	18
IC756	CHEVY	400	6.000	SLD DOME -6.3cc 2V	2-1/16", 1-3/16"	18
IC757	CHEVY	400	6.000	STEP-DISH 26.6cc 2V	2-1/16", 1-3/16"	18
IC758	CHEVY	400	6.000	STEP-DISH 15.2cc 2V	2-1/16", 1-3/16"	18
IC759	CHEVY	377	5.700	FLAT TOP 4.8cc 2V	2-1/16", 1-3/16"	14
IC760	CHEVY	377	5.700	SLD DOME -6.3cc 2V	2-1/16", 1-3/16"	15
IC761	CHEVY	377	5.700	STEP-DISH 15.2cc 2V	2-1/16", 1-3/16"	14
IC762	CHEVY	377	6.000	FLAT TOP 4.8cc 2V	2-1/16", 1-3/16"	14
IC763	CHEVY	377	6.000	SLD DOME -6.3cc 2V	2-1/16", 1-3/16"	15
IC764	CHEVY	377	6.000	STEP-DISH 15.2cc 2V	2-1/16", 1-3/16"	14
IC765	CHEVY	353	6.000	FLAT TOP 4.8cc 2V	2-1/16", 1-3/16"	13
IC776	CHEVY	427	6.135	FLAT TOP 3cc 1V	2-1/16", 1-3/16"	20
IC777	CHEVY	427	6.135	HLW DOME -18cc 1V CC	2-1/16", 1-3/16"	20
IC778	CHEVY	454	6.385	HLW DOME -18cc 1V CC	2-1/16", 1-3/16"	21
IC779	CHEVY	454	6.135	HLW DOME -18cc 1V CC	2-1/16", 1-3/16"	21
IC780	CHEVY	454	6.135	FLAT TOP 3cc 1V	2-1/16", 1-3/16"	21
IC781	CHEVY	454	6.385	FLAT TOP 3cc 1V	2-1/16", 1-3/16"	21
IC782	CHEVY	454	6.135	HLW DOME -27cc 1V CC	2-1/16", 1-3/16"	21
IC783	CHEVY	454	6.385	HLW DOME -27cc 1V CC	2-1/16", 1-3/16"	21
IC784	CHEVY	489	6.135	FLAT TOP 3cc 1V	2-1/16", 1-3/16"	22
IC784	CHEVY	427	6.385	FLAT TOP 3cc 1V	2-1/16", 1-3/16"	20
IC785	CHEVY	489	6.385	FLAT TOP 3cc 1V	2-1/16", 1-3/16"	22
IC786	CHEVY	489	6.135	SLD DOME -12cc 1V CC	2-1/16", 1-3/16"	22

PART#	MFG	DISP	ROD	DESCRIPTION	RING PACK	PG.
IC786	CHEVY	427	6.385	SLD DOME -12cc 1V CC	2-1/16", 1-3/16"	20
IC787	CHEVY	489	6.385	SLD DOME -12cc 1V CC	2-1/16", 1-3/16"	22
IC788	CHEVY	489	6.135	HLW DOME -20cc 1V CC	2-1/16", 1-3/16"	22
IC788	CHEVY	427	6.385	HLW DOME -20cc 1V CC	2-1/16", 1-3/16"	20
IC789	CHEVY	489	6.385	HLW DOME -20cc 1V CC	2-1/16", 1-3/16"	22
IC790	CHEVY	327	6.000	FLAT TOP 4.9cc 2V	2-1/16", 1-3/16"	10
IC791	CHEVY	327	6.000	SLD DOME -6.3cc 2V	2-1/16", 1-3/16"	11
IC792	CHEVY	327	5.700	FLAT TOP 4.9cc 2V	2-1/16", 1-3/16"	10
IC793	CHEVY	327	5.700	SLD DOME -6.3cc 2V	2-1/16", 1-3/16"	11
IC794	CHEVY	383	6.000	HLW DOME -10cc 2V	2-1/16", 1-3/16"	16
IC795	CHEVY	383	6.000	HLW DOME -13cc 2V	2-1/16", 1-3/16"	16
IC796	CHEVY	383	5.700	HLW DOME -10cc 2V	2-1/16", 1-3/16"	16
IC797	CHEVY	383	5.700	HLW DOME -13cc 2V	2-1/16", 1-3/16"	16
IC798	CHEVY	350	6.000	HLW DOME -10cc 2V	2-1/16", 1-3/16"	13
IC799	CHEVY	350	6.000	HLW DOME -13cc 2V	2-1/16", 1-3/16"	13
IC800	CHEVY	350	5.700	HLW DOME -10cc 2V	2-1/16", 1-3/16"	13
IC801	CHEVY	350	5.700	DOME -13cc 2V	2-1/16", 1-3/16"	13
IC802	CHEVY	302	5.700	HWL DOME -9.7cc 2V	2-1/16", 1-3/16"	9
IC803	CHEVY	302	5.700	HWL DOME -12.7cc 2V	2-1/16", 1-3/16"	9
IC805	CHEVY	502	6.135	FLAT TOP 3cc 1V	2-1/16", 1-3/16"	23
IC806	CHEVY	502	6.385	FLAT TOP 3cc 1V	2-1/16", 1-3/16"	23
IC807	CHEVY	502	6.135	SLD DOME -17cc 1V CC	2-1/16", 1-3/16"	23
IC808	CHEVY	502	6.385	SLD DOME -17cc 1V CC	2-1/16", 1-3/16"	23
IC811	CHEVY	540	6.135	FLAT TOP 3cc 1V	2-1/16", 1-3/16"	24
IC812	CHEVY	540	6.385	FLAT TOP 3cc 1V	2-1/16", 1-3/16"	24
IC813	CHEVY	540	6.135	SLD DOME -10cc 1V CC	2-1/16", 1-3/16"	24
IC814	CHEVY	540	6.385	SLD DOME -10cc 1V CC	2-1/16", 1-3/16"	24
IC817	CHEVY	327	6.000	HLW DOME -9.7cc 2V	2-1/16", 1-3/16"	11
IC818	CHEVY	327	6.000	HLW DOME -12.7cc 2V	2-1/16", 1-3/16"	11
IC822	CHRY	440	6.768	FLAT TOP 4.5cc 2V	2-1/16", 1-3/16"	30
IC823	CHRY	512	6.535	FLAT TOP 4.5cc 2V	2-1/16", 1-3/16"	33
IC823	CHRY	450	6.768	FLAT TOP 4.5cc 2V	2-1/16", 1-3/16"	30
IC823	CHRY	541	7.100	FLAT TOP 4.5cc 2V	2-1/16", 1-3/16"	34
IC824	CHRY	463	7.100	FLAT TOP 4.5cc 2V	2-1/16", 1-3/16"	31
IC825	CHRY	468	6.535	FLAT TOP 4.5cc 2V	2-1/16", 1-3/16"	31
IC826	CHRY	493	6.768	FLAT TOP 4.5cc 2V	2-1/16", 1-3/16"	32
IC827	CHRY	498	6.768	FLAT TOP 4.5cc 2V	2-1/16", 1-3/16"	32
IC828	CHRY	505	7.100	FLAT TOP 4.5cc 2V	2-1/16", 1-3/16"	33
IC829	CHRY	520	7.100	FLAT TOP 4.5cc 2V	2-1/16", 1-3/16"	34
IC830	CHEVY	305	5.700	FLAT TOP 3.2cc 2V	2-1/16", 1-3/16"	10
IC831	CHEVY	305	5.700	FLAT TOP 5.3cc 4V	2-1/16", 1-3/16"	10
IC832	CHEVY	305	6.000	FLAT TOP 3.2cc 2V	2-1/16", 1-3/16"	10
IC833	CHEVY	305	6.000	FLAT TOP 5.3cc 4V	2-1/16", 1-3/16"	10
IC834	CHEVY	334	5.700	STEP-DISH 10cc 2V	2-1/16", 1-3/16"	11
IC835	CHEVY	334	6.000	STEP-DISH 10cc 2V	2-1/16", 1-3/16"	11
IC836	CHRY	440	6.768	STEP-DISH 12cc 2V	2-1/16", 1-3/16"	30
IC837	CHRY	512	6.535	STEP-DISH 12cc 2V	2-1/16", 1-3/16"	33
IC837	CHRY	450	6.768	STEP-DISH 12cc 2V	2-1/16", 1-3/16"	30
IC837	CHRY	541	7.100	STEP-DISH 12cc 2V	2-1/16", 1-3/16"	34
IC838	CHRY	463	7.100	STEP-DISH 16.4cc 2V	2-1/16", 1-3/16"	31
IC839	CHRY	468	6.535	STEP-DISH 16.4cc 2V	2-1/16", 1-3/16"	31
IC840	CHRY	493	6.768	STEP-DISH 23.7cc 2V	2-1/16", 1-3/16"	32
IC841	CHRY	498	6.768	STEP-DISH 23.7cc 2V	2-1/16", 1-3/16"	32
IC842	CHRY	505	7.100	STEP-DISH 26.7cc 2V	2-1/16", 1-3/16"	33
IC843	CHRY	520	7.100	STEP-DISH 30.4cc 2V	2-1/16", 1-3/16"	34
IC844	CHRY	318	6.123	FLAT TOP 4.7cc 2V	2-1/16", 1-3/16"	26

TECH LINE 800-648-7970 or email at tech@uempistons.com

PART#	MFG	DISP	ROD	DESCRIPTION	RING PACK	PG.
IC845	CHRY	318	6.123	SLD DOME -4.9cc 2V	2-1/16", 1-3/16"	26
IC846	CHRY	390	6.123	FLAT TOP 4.7cc 2V	2-1/16", 1-3/16"	27
IC847	CHRY	390	6.123	STEP-DISH 23cc 2V	2-1/16", 1-3/16"	27
IC848	FORD	393W	5.956	STEP-DISH 28cc 2V	2-1/16", 1-3/16"	43
IC849	CHEVY	434	6.000	FLAT TOP 4.8cc 2V	2-1/16", 1-3/16"	20
IC850	CHEVY	434	6.000	STEP-DISH 26.5cc 2V	2-1/16", 1-3/16"	19
IC851	CHEVY	434	6.000	STEP-DISH 15.2cc 2V	2-1/16", 1-3/16"	19
IC852	FORD	545	6.700	DISH 39cc 1V	2-1/16", 1-3/16"	54
IC852	FORD	520	6.800	DISH 39cc 1V	2-1/16", 1-3/16"	53
IC853	FORD	545	6.700	FLAT TOP 7.6cc 1V	2-1/16", 1-3/16"	55
IC853	FORD	520	6.800	FLAT TOP 7.6cc 1V	2-1/16", 1-3/16"	53
IC854	FORD	545	6.700	STEP-DISH 39cc 1V	2-1/16", 1-3/16"	54
IC854	FORD	520	6.800	STEP-DISH 39cc 1V	2-1/16", 1-3/16"	52
IC855	FORD	460	6.800	FLAT TOP 3.4cc 2V	2-1/16", 1-3/16"	52
IC856	FORD	460	6.800	STEP-DISH 15cc 1V	2-1/16", 1-3/16"	51
IC857	FORD	502	6.800	STEP-DISH 28cc 1V	2-1/16", 1-3/16"	52
IC858	FORD	502	6.800	FLAT TOP 3.4cc 2V	2-1/16", 1-3/16"	52
IC859	FORD	545	6.700	FLAT TOP 3.4cc 2V	2-1/16", 1-3/16"	55
IC859	FORD	520	6.800	FLAT TOP 3.4cc 2V	2-1/16", 1-3/16"	53
IC860	FORD	545	6.700	STEP-DISH 22cc 1V	2-1/16", 1-3/16"	54
IC860	FORD	520	6.800	STEP-DISH 22cc 1V	2-1/16", 1-3/16"	52
IC861	FORD	545	6.700	DISH 22cc 1V	2-1/16", 1-3/16"	54
IC861	FORD	520	6.800	DISH 22cc 1V	2-1/16", 1-3/16"	53
IC862	FORD	390FE	6.490	FLAT TOP 5cc 2V	2-1/16", 1-3/16"	48
IC863	FORD	410FE	6.490	DCUP 12.9cc 2V	2-1/16", 1-3/16"	48
IC864	FORD	427FE	6.490	FLAT TOP 7.5cc 2V	2-1/16", 1-3/16"	48
IC865	FORD	427FE	6.490	DCUP 16.3cc 2V	2-1/16", 1-3/16"	48
IC866	FORD	428FE	6.490	FLAT TOP 5cc 2V	2-1/16", 1-3/16"	49
IC867	FORD	428FE	6.490	DCUP 16.3cc 2V	2-1/16", 1-3/16"	49
IC868	FORD	438FE	6.700	DCUP 16.3cc 2V	2-1/16", 1-3/16"	49
IC869	FORD	452FE	6.490	FLAT TOP 7.5cc 2V	2-1/16", 1-3/16"	50
IC870	FORD	452FE	6.490	STEP-DISH 21.5cc 2V	2-1/16", 1-3/16"	50
IC871	FORD	455FE	6.700	STEP-DISH 22.8cc 2V	2-1/16", 1-3/16"	50
IC872	FORD	482FE	6.700	FLAT TOP 7.5cc 2V	2-1/16", 1-3/16"	51
IC873	FORD	482FE	6.700	STEP-DISH 28.4cc 2V	2-1/16", 1-3/16"	51
IC874	FORD	351C	6.200	FLAT TOP 3cc 1V	2-1/16", 1-3/16"	46
IC875	FORD	351C	6.200	DISH 11.7cc 1V	2-1/16", 1-3/16"	46
IC876	FORD	402C	6.000	FLAT TOP 3cc 1V	2-1/16", 1-3/16"	47
IC876	FORD	377C	6.125	FLAT TOP 3cc 1V	2-1/16", 1-3/16"	46
IC877	FORD	402C	6.000	STEP-DISH 17.5cc 1V	2-1/16", 1-3/16"	47
IC877	FORD	377C	6.125	STEP-DISH 17.5cc 1V	2-1/16", 1-3/16"	46
IC878	FORD	387C	6.000	FLAT TOP 3cc 1V	2-1/16", 1-3/16"	47
IC879	FORD	387C	6.000	STEP-DISH 20cc 1V	2-1/16", 1-3/16"	47
IC881	FORD	402C	6.000	STEP-DISH 24cc 1V	2-1/16", 1-3/16"	47
IC881	FORD	377C	6.125	STEP-DISH 24cc 1V	2-1/16", 1-3/16"	46
IC882	FORD	4.6L	5.933	FLAT TOP 0cc	2-1.5mm, 1-3mm	36
IC882	FORD	5.4	6.657	FLAT TOP 0cc	2-1.5mm, 1-3mm	38
IC883	FORD	4.6L	5.933	SPHERICAL DISH 10cc	2-1.5mm, 1-3mm	36
IC883	FORD	5.4	6.657	SPHERICAL DISH 10cc	2-1.5mm, 1-3mm	37
IC884	FORD	4.6L	5.933	SPHERICAL DISH 17cc	2-1.5mm, 1-3mm	36
IC884	FORD	5.4	6.657	SPHERICAL DISH 17cc	2-1.5mm, 1-3mm	37
IC885	FORD	4.6L	5.933	SPHERICAL DISH 21cc	2-1.5mm, 1-3mm	36
IC885	FORD	5.4	6.657	SPHERICAL DISH 21cc	2-1.5mm, 1-3mm	37
IC886	OLDS	455	6.735	FLAT TOP 14.4cc 2V	2-1/16", 1-3/16"	56
IC887	OLDS	455	6.735	STEP-DISH 25cc 2V	2-1/16", 1-3/16"	56
IC888	PONT	455	6.630	FLAT TOP 5.5cc 2V	2-1/16", 1-3/16"	58

PART#	MFG	DISP	ROD	DESCRIPTION	RING PACK	PG.
IC889	PONT	455	6.630	DCUP 15cc 2V	2-1/16", 1-3/16"	58
IC890	PONT	400	6.630	FLAT TOP 4.5cc 2V	2-1/16", 1-3/16"	57
IC891	PONT	400	6.630	DCUP 14cc 2V	2-1/16", 1-3/16"	57
IC892	PONT	428	6.630	DCUP 10cc 2V	2-1/16", 1-3/16"	57
IC893	CHEVY	434	6.000	SLD DOME -7cc 2V	2-1/16", 1-3/16"	20
IC894	CHRY	472 HEMI	6.860	HEMI DOME -39.6cc 2V	2-1/16", 1-3/16"	35
IC895	CHRY	472 HEMI	6.860	HEMI DOME -57cc 2V	2-1/16", 1-3/16"	35
IC896	CHRY	472 HEMI	6.860	HEMI DOME -70.6cc 2V	2-1/16", 1-3/16"	35
IC897	CHRY	472 HEMI	6.860	HEMI DOME -81.5cc 2V	2-1/16", 1-3/16"	35
IC898	CHRY	472 HEMI	6.860	HEMI DOME -90.5cc 2V	2-1/16", 1-3/16"	35
IC934	FORD	4.6L	5.933	SPHERICAL DISH 16.6cc 3V	2-1.5mm, 1-3mm	36
IC934	FORD	5.4	6.657	SPHERICAL DISH 16.6cc 3V	2-1.5mm, 1-3mm	37
IC936	CHRY	528 HEMI	6.860	HEMI DOME -70cc 2V	2-1/16", 1-3/16"	35
IC937	PONT	433	6.800	FLAT TOP 4.3cc 2V	2-1/16", 1-3/16"	57
IC938	PONT	468	6.800	DISH 10.6cc 2V	2-1/16", 1-3/16"	58
IC939	FORD	2300	5.200	FLAT TOP 2.5cc 2V	2-1/16", 1-3/16"	79
IC941	PONT	468	6.800	FLAT TOP 4.3cc 2V	2-1/16", 1-3/16"	59
IC942	PONT	495	6.700	FLAT TOP 4.3cc 2V	2-1/16", 1-3/16"	59
IC943	PONT	495	6.700	DISH 16.8cc 2V	2-1/16", 1-3/16"	59
IC944	AMC	4.6L	6.123	DISH 21cc	2-5/64", 1-3/16"	6
IC945	AMC	4.6L	6.123	DISH 10.8cc	2-5/64", 1-3/16"	6
IC946	FORD	2300	5.700	FLAT TOP 2.5cc 2V	2-1/16", 1-3/16"	79
IC947	CHEVY	489	6.385	DISH 11.5cc 1V	2-1/16", 1-3/16"	22
IC948	CHEVY	502	6.385	DISH 11.5cc 1V	2-1/16", 1-3/16"	23
IC949	CHEVY	540	6.385	DISH 23cc 1V	2-1/16", 1-3/16"	24
IC950	CHEVY	572	6.535	FLAT TOP 3cc 1V	2-1/16", 1-3/16"	25
IC951	CHEVY	572	6.535	DISH 20cc 1V	2-1/16", 1-3/16"	25
IC952	CHEVY	572	6.535	DISH 28cc 1V	2-1/16", 1-3/16"	25
IC953	FORD	545	6.700	FLAT TOP 4.8cc 2V	2-1/16", 1-3/16"	55
IC953	FORD	520	6.800	FLAT TOP 4.8cc 2V	2-1/16", 1-3/16"	54
IC954	FORD	545	6.700	STEP-DISH 22cc 1V	2-1/16", 1-3/16"	54
IC954	FORD	520	6.800	STEP-DISH 22cc 1V	2-1/16", 1-3/16"	53
IC955	FORD	545	6.700	STEP-DISH 39cc 1V	2-1/16", 1-3/16"	54
IC955	FORD	520	6.800	STEP-DISH 39cc 1V	2-1/16", 1-3/16"	53
IC956	CHRY	572	7.100	FLAT TOP 4.9cc 2V	2-1/16", 1-3/16"	34
IC957	CHEVY	305	5.700	FLAT TOP 3.4cc 2V	2-1.5mm, 1-3mm	10
IC958	CHEVY	427	6.135	DOME -89.1cc 2V	2-1/16", 1-3/16"	9
IC959	CHEVY	409	6.010	W-HEAD -89.1cc 2V	2-1/16", 1-3/16"	9
IC960	CHEVY	468	6.135	W-HEAD -89.1cc 2V	2-1/16", 1-3/16"	9
IC963	CHEVY	395	6.000	SLD DOME -11cc 2V	2-1.5mm, 1-3mm	17
IC964	CHEVY	395	6.000	SLD DOME -2.9cc 2V	2-1.5mm, 1-3mm	17
IC965	CHEVY	421	6.000	HLW DOME -7.8cc	2-1.5mm, 1-3mm	18
IC966	CHEVY	421	6.000	FLAT TOP 7.1cc	2-1.5mm, 1-3mm	19
IC967	CHEVY	305	6.000	FLAT TOP 3.4cc 2V	2-1.5mm, 1-3mm	10
IC968	CHRY	440	6.768	FLAT TOP 4.5cc 2V	2-1/16", 1-3/16"	30
IC969	CHRY	408	6.123	SLD DOME -5cc 2V	2-1/16", 1-3/16"	28
IC970	CHEVY	383	6.000	SLD DOME -11cc 2V	2-1.5mm, 1-3mm	16
IC971	CHEVY	350	5.700	FLAT TOP 2.1cc 2V	2-1.5mm, 1-3mm	11
IC972	CHEVY	383	6.000	SLD DOME -2cc 2V	2-1.5mm, 1-3mm	16
IC976	CHEVY	350	6.000	DOME -11cc 2V	2-1.5mm, 1-3mm	13
IC977	CHEVY	350	6.000	DOME -2.6cc 2V	2-1.5mm, 1-3mm	13
IC978	CHEVY	395	6.000	FLAT TOP 6.3cc 2V	2-1.5mm, 1-3mm	17
IC979	CHEVY	409	6.135	DOME -89.1cc 2V	2-1/16", 1-3/16"	9
IC981	PONT	468	6.635	STEP-DISH 30cc 2V	2-1/16", 1-3/16"	58
IC982	CHRY	408	6.123	STEP-DISH 34cc 2V	2-1/16", 1-3/16"	28
IC983	CHRY	408	6.123	STEP-DISH 27cc 2V	2-1/16", 1-3/16"	28

TECH LINE 800-648-7970 or email at tech@uempistons.com



DIAMETRICAL LISTING

BORE	COMP. HT.	PART#	PAGE
3.312	1.312	IC627	36
3.312	1.374	IC626	36
3.312	1.436	IC625	36
3.312	1.561	IC624	36
3.4449	1.148	IC637C	79
3.551	1.220	IC882	36
3.551	1.220	IC882	38
3.551	1.220	IC883	36
3.551	1.220	IC883	37
3.551	1.220	IC884	36
3.551	1.220	IC884	37
3.551	1.220	IC885	36
3.551	1.220	IC885	37
3.551	1.220	IC934	36
3.551	1.220	IC934	37
3.622	1.167	IC987	85
3.622	1.213	IC986	84
3.622	1.345	IC985	84
3.736	1.133	IC835	11
3.736	1.265	IC832	10
3.736	1.265	IC833	10
3.736	1.265	IC967	10
3.736	1.433	IC834	11
3.736	1.565	IC830	10
3.736	1.565	IC831	10
3.736	1.565	IC957	10
3.780	1.090	IC946	79
3.780	1.590	IC939	79
3.875	1.353	IC944	6
3.875	1.353	IC945	6
3.910	1.465	IC846	27
3.910	1.465	IC847	27
3.910	1.810	IC844	26
3.910	1.810	IC845	26
3.917	1.220	IC645C	35
3.917	1.220	IC646C	35
3.917	1.220	IC647C	35
3.917	1.165	IC648C	35
3.917	1.165	IC649C	35
3.917	1.165	IC650C	35
3.917	1.090	IC651C	35
3.917	1.090	IC652C	35
3.917	1.090	IC653C	35
4.000	1.062	IC963	17
4.000	1.062	IC964	17
4.000	1.062	IC978	17
4.000	1.090	IC730	40
4.000	1.090	IC613	40
4.000	1.090	IC709	41
4.000	1.090	IC739	41
4.000	1.090	IC9971	75
4.000	1.125	IC718	15
4.000	1.125	IC734	15
4.000	1.125	IC733	16
4.000	1.125	IC794	16
4.000	1.125	IC795	16
4.000	1.125	IC9961	67
4.000	1.125	IC9963	67
4.000	1.125	IC9965	66
4.000	1.125	IC9966	67
4.000	1.130	IC970	16

BORE	COMP. HT.	PART#	PAGE
4.000	1.130	IC972	16
4.000	1.170	IC720	40
4.000	1.170	IC725	40
4.000	1.170	IC740	40
4.000	1.170	IC9970	74
4.000	1.187	IC606	14
4.000	1.191	IC876	46
4.000	1.191	IC877	46
4.000	1.191	IC881	46
4.000	1.191	IC876	46
4.000	1.191	IC877	46
4.000	1.191	IC881	46
4.000	1.219	IC605	14
4.000	1.240	IC721	44
4.000	1.240	IC724	44
4.000	1.241	IC874	46
4.000	1.241	IC875	45
4.000	1.250	IC604	12
4.000	1.250	IC623	12
4.000	1.250	IC976	13
4.000	1.250	IC977	13
4.000	1.250	IC9962	65
4.000	1.250	IC9964	65
4.000	1.250	IC9967	65
4.000	1.250	IC9980	65
4.000	1.265	IC731	11
4.000	1.265	IC702	12
4.000	1.265	IC732	13
4.000	1.265	IC798	13
4.000	1.265	IC799	13
4.000	1.266	IC878	47
4.000	1.266	IC879	47
4.000	1.280	IC750	44
4.000	1.280	IC9923	76
4.000	1.280	IC9974	76
4.000	1.298	IC746	39
4.000	1.298	IC747	39
4.000	1.365	IC722	42
4.000	1.365	IC723	42
4.000	1.365	IC722	44
4.000	1.365	IC723	43
4.000	1.365	IC722	44
4.000	1.385	IC790	10
4.000	1.385	IC791	11
4.000	1.385	IC817	11
4.000	1.385	IC818	11
4.000	1.408	IC9954	68
4.000	1.408	IC9955	68
4.000	1.425	IC728	15
4.000	1.425	IC735	15
4.000	1.425	IC737	16
4.000	1.425	IC796	16
4.000	1.425	IC797	16
4.000	1.425	IC9926	66
4.000	1.425	IC9914	67
4.000	1.425	IC9916	67
4.000	1.425	IC9931	67
4.000	1.425	IC9935	67
4.000	1.445	IC982	28
4.000	1.445	IC983	28
4.000	1.445	IC984	28

BORE	COMP. HT.	PART#	PAGE
4.000	1.450	IC9977	73
4.000	1.450	IC9978	73
4.000	1.465	IC744	28
4.000	1.465	IC745	27
4.000	1.465	IC969	28
4.000	1.550	IC9979	65
4.000	1.550	IC9913	65
4.000	1.550	IC9929	65
4.000	1.550	IC9933	65
4.000	1.565	IC726	11
4.000	1.565	IC717	12
4.000	1.565	IC971	11
4.000	1.565	IC727	13
4.000	1.565	IC800	13
4.000	1.565	IC801	13
4.000	1.608	IC719	43
4.000	1.608	IC736	38
4.000	1.608	IC719	38
4.000	1.608	IC736	38
4.000	1.608	IC9972	74
4.000	1.608	IC9973	74
4.000	1.653	IC688C	46
4.000	1.675	IC742	26
4.000	1.675	IC741	26
4.000	1.675	IC743	27
4.000	1.675	IC9976	73
4.000	1.678	IC792	10
4.000	1.678	IC793	11
4.000	1.774	IC729	41
4.000	1.774	IC738	42
4.000	1.774	IC9925	75
4.000	1.825	IC802	9
4.000	1.825	IC803	9
4.000	1.608/612	IC848	43
4.000	1.608/612	IC719	43
4.000	1.608/612	IC736	43
4.040	1.270	IC9975	73
4.050	1.388	IC868	49
4.050	1.670	IC863	48
4.050	1.770	IC862	48
4.120	1.595	IC892	57
4.120	1.714	IC9946	76
4.120	1.720	IC890	57
4.120	1.720	IC891	57
4.125	1.000	IC640	17
4.125	1.000	IC611	19
4.125	1.000	IC612	19
4.125	1.000	IC640	20
4.125	1.015	IC849	20
4.125	1.015	IC850	19
4.125	1.015	IC851	19
4.125	1.015	IC893	20
4.125	1.062	IC965	18
4.125	1.062	IC966	19
4.125	1.090	IC617	42
4.125	1.125	IC609	17
4.125	1.125	IC755	18
4.125	1.125	IC756	18
4.125	1.125	IC757	18
4.125	1.125	IC758	18
4.125	1.125	IC9968	68

DIAMETRICAL LISTING, *continued*



BORE	COMP. HT.	PART#	PAGE
4.125	1.187	IC608	16
4.125	1.261	IC762	14
4.125	1.261	IC764	14
4.125	1.261	IC763	15
4.125	1.261	IC9938	66
4.125	1.261	IC9940	66
4.125	1.275	IC942	59
4.125	1.275	IC943	59
4.125	1.295	IC639	45
4.125	1.300	IC938	58
4.125	1.300	IC941	59
4.125	1.380	IC765	13
4.125	1.425	IC937	57
4.125	1.425	IC751	18
4.125	1.425	IC752	18
4.125	1.425	IC753	18
4.125	1.425	IC754	18
4.125	1.425	IC9969	68
4.125	1.443	IC9941	68
4.125	1.465	IC981	58
4.125	1.561	IC759	14
4.125	1.561	IC761	14
4.125	1.561	IC760	15
4.125	1.561	IC9937	66
4.125	1.561	IC9939	66
4.125	1.561	IC9943	66
4.125	1.645	IC9981	69
4.125	1.765	IC9948	69
4.125	1.765	IC9949	69
4.125	1.932	IC958	9
4.126	1.750	IC886	56
4.126	1.750	IC887	56
4.130	1.325	IC871	50
4.130	1.670	IC866	49
4.130	1.670	IC867	49
4.150	1.490	IC888	58
4.150	1.490	IC889	58
4.151	1.490	IC9960	76
4.233	1.325	IC872	51
4.233	1.325	IC873	51
4.233	1.670	IC869	50
4.233	1.670	IC870	50
4.233	1.770	IC864	48
4.233	1.770	IC865	48
4.250	1.270	IC785	22
4.250	1.270	IC947	22
4.250	1.270	IC603	22
4.250	1.270	IC787	22
4.250	1.270	IC789	22
4.250	1.270	IC993	22
4.250	1.270	IC9951	71
4.250	1.270	IC9952	71
4.250	1.395	IC781	21
4.250	1.395	IC601	21
4.250	1.395	IC778	21
4.250	1.395	IC783	21
4.250	1.395	IC991	21
4.250	1.520	IC784	20
4.250	1.520	IC786	20
4.250	1.520	IC788	20
4.250	1.520	IC989	21

BORE	COMP. HT.	PART#	PAGE
4.250	1.520	IC999	21
4.250	1.520	IC784	22
4.250	1.520	IC786	22
4.250	1.520	IC788	22
4.250	1.520	IC989	22
4.250	1.520	IC999	22
4.250	1.645	IC780	21
4.250	1.645	IC600	21
4.250	1.645	IC779	21
4.250	1.645	IC782	21
4.250	1.645	IC990	21
4.250	1.645	IC9918	71
4.250	1.645	IC9919	71
4.250	1.645	IC9920	70
4.250	1.765	IC776	20
4.250	1.765	IC777	20
4.250	1.765	IC988	21
4.250	1.765	IC998	21
4.250	1.765	IC894	35
4.250	1.765	IC895	35
4.250	1.765	IC896	35
4.250	1.765	IC897	35
4.250	1.765	IC898	35
4.250	1.765	IC9950	70
4.250	1.765	IC9958	70
4.250	1.765	IC9917	70
4.312	2.000	IC960	9
4.312	2.182	IC979	9
4.313	2.325	IC959	9
4.320	1.485	IC828	33
4.320	1.485	IC842	32
4.320	1.660	IC824	31
4.320	1.660	IC838	30
4.320	1.867	IC826	32
4.320	1.869	IC840	31
4.320	1.991	IC9947	74
4.320	2.067	IC822	30
4.320	2.067	IC836	29
4.320	2.067	IC968	30
4.320	2.067	IC9953	74
4.342	1.122	IC827	32
4.342	1.122	IC841	32
4.342	1.322	IC823	30
4.342	1.322	IC837	30
4.342	1.322	IC823	34
4.342	1.322	IC837	33
4.342	1.423	IC829	34
4.342	1.423	IC843	33
4.342	1.480	IC825	31
4.342	1.480	IC839	31
4.350	1.305	IC631	59
4.360	1.350	IC852	53
4.360	1.350	IC854	52
4.360	1.350	IC859	53
4.360	1.350	IC860	52
4.360	1.350	IC861	53
4.360	1.350	IC954	53
4.360	1.350	IC955	53
4.360	1.350	IC852	53
4.360	1.350	IC853	53
4.360	1.350	IC854	54

BORE	COMP. HT.	PART#	PAGE
4.360	1.350	IC860	54
4.360	1.350	IC861	54
4.360	1.350	IC953	54
4.360	1.350	IC853	55
4.360	1.350	IC859	55
4.360	1.350	IC953	55
4.360	1.350	IC954	54
4.360	1.350	IC955	54
4.360	1.425	IC857	52
4.360	1.425	IC858	52
4.360	1.577	IC855	52
4.360	1.515	IC856	51
4.360	1.772	IC635	51
4.360	1.772	IC636	52
4.375	1.322	IC823	34
4.375	1.322	IC837	34
4.466	1.270	IC812	24
4.466	1.270	IC949	24
4.466	1.270	IC814	24
4.466	1.270	IC997	24
4.466	1.395	IC806	23
4.466	1.395	IC948	23
4.466	1.395	IC808	23
4.466	1.395	IC995	23
4.466	1.520	IC811	24
4.466	1.520	IC813	24
4.466	1.520	IC996	24
4.466	1.645	IC805	23
4.466	1.645	IC807	23
4.466	1.645	IC994	23
4.500	1.270	IC9957	72
4.500	1.355	IC956	34
4.500	1.395	IC950	25
4.500	1.395	IC951	25
4.500	1.395	IC952	25
4.500	1.780	IC936	35
92mm	1.283	IC638C	82
99.5mm	1.161	IC629C	83
99.5mm	1.209	IC992C	83

